

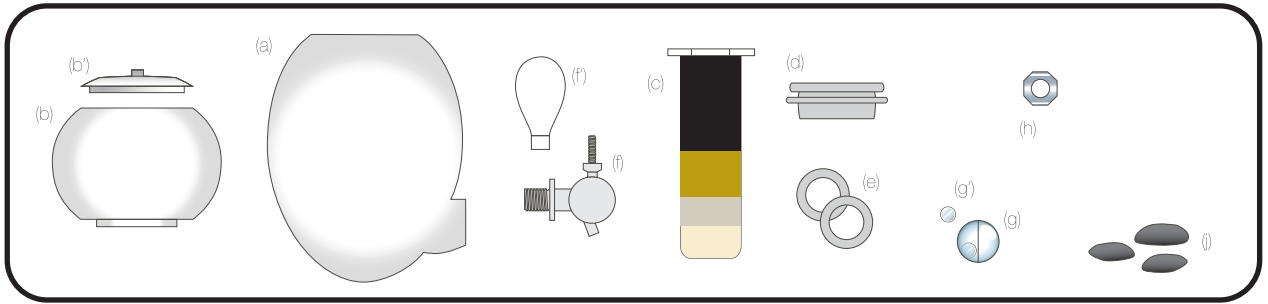
This is not an  
instruction book.  
You can read it.

2 minutes  
7 steps

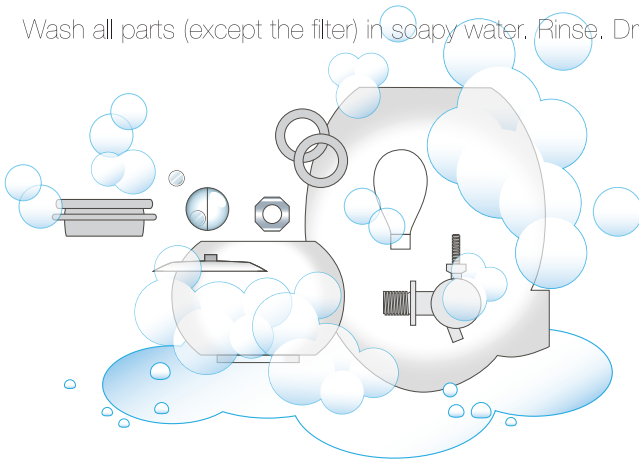
Live easily the aquaovo  
experience.



aqua**OVO**

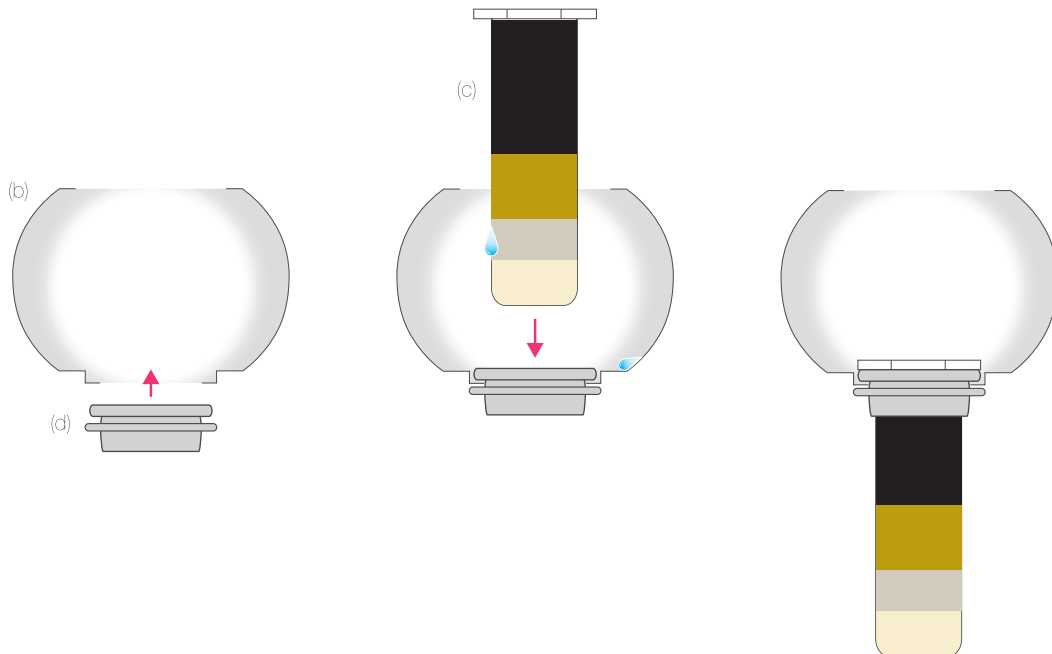


- ① Wash all parts (except the filter) in soapy water. Rinse. Dry.



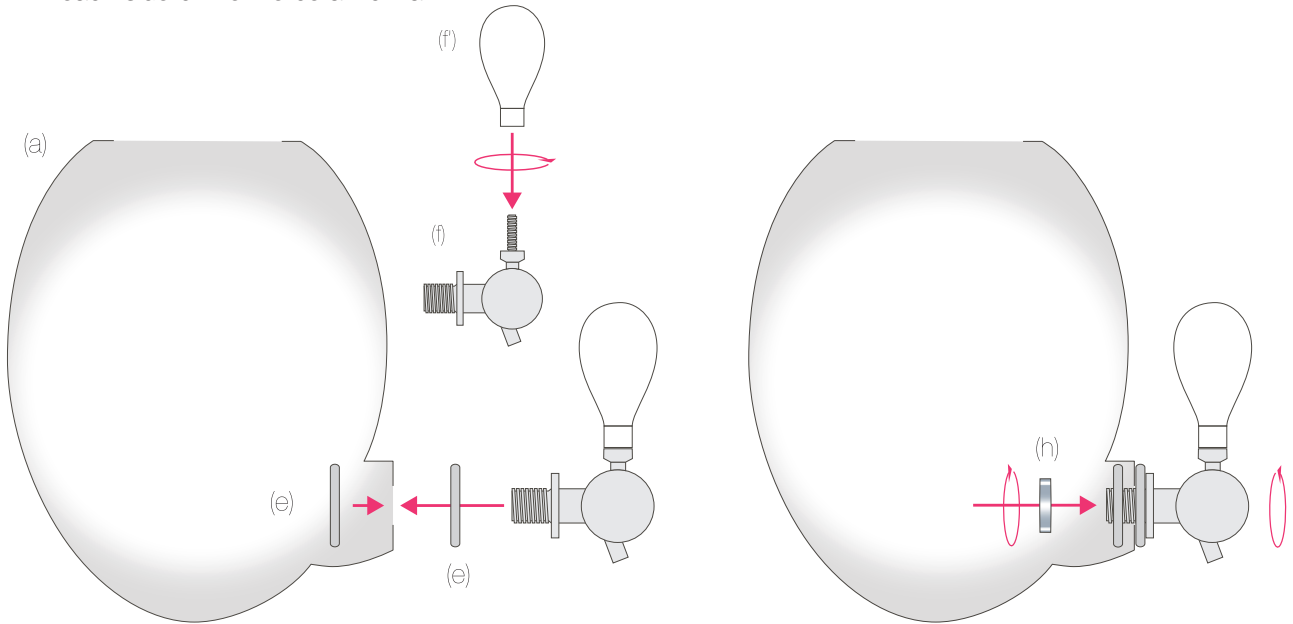
Rinse the filter in clear water.

- ② Insert the first lip of the silicon ring (d) through the bottom opening of the top tank. **Wet the outside of the cartridge (c) with water or Isopropyl Alcohol** and firmly push it inside the silicon ring through the top opening of the top tank and until the glass lip of the cartridge is in contact with the ring.

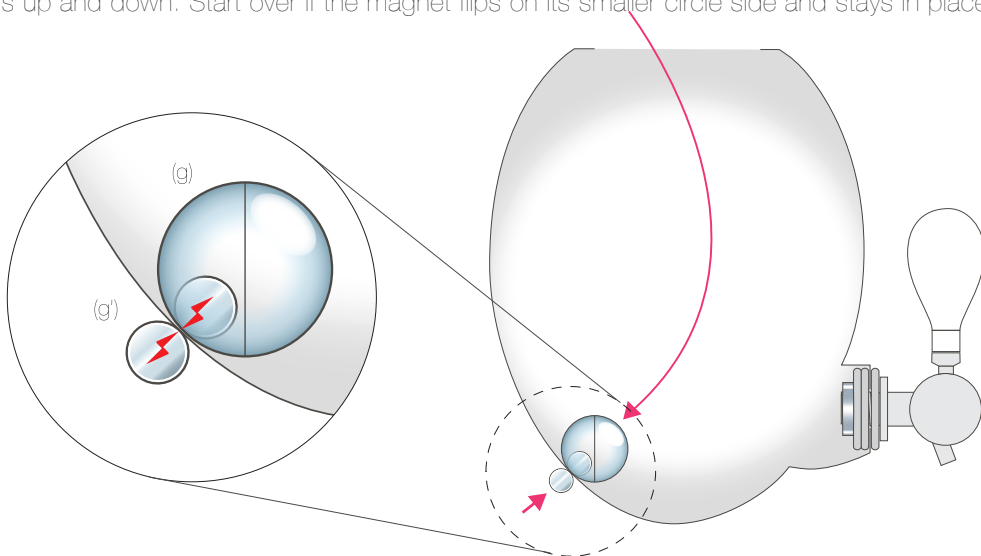


- ③ Insert one of the silicon o-rings (e) onto the tap (f)+(f') thread. Insert the tap into the bottom tank (a). Then insert the other o-ring (e) and thread the stainless ring and nut (h) onto the tap inside the tank, thus forming a seal on each side of the ceramic wall.

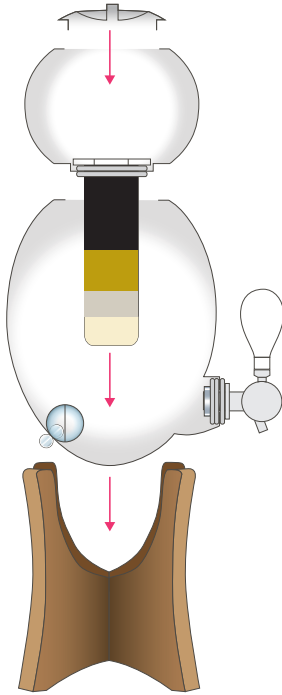
Secure the tap to the bottom tank by threading the metal nut (h) onto the tap. Tighten by giving one last clockwise turn using the tap (f) as a lever while holding the metal nut in place with your other hand.



- ④ Hold the plastic ball (g) with the magnet inside along the interior wall of the bottom tank (a). Slowly bring the wider side of the other magnet (g') towards the corresponding area of the outer wall of the tank until the magnetic connection is made. The connection is good when the magnet remains on its wider side and rolls up and down. Start over if the magnet flips on its smaller circle side and stays in place.



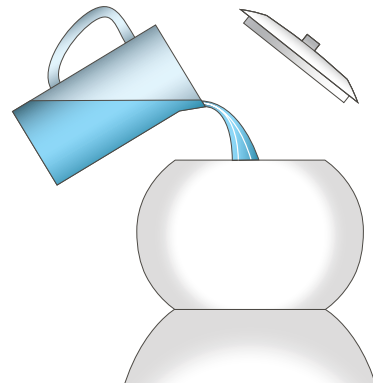
- ⑤ Place the large reservoir (c) on its stand. Now place the smaller reservoir with filter in place onto the larger reservoir.



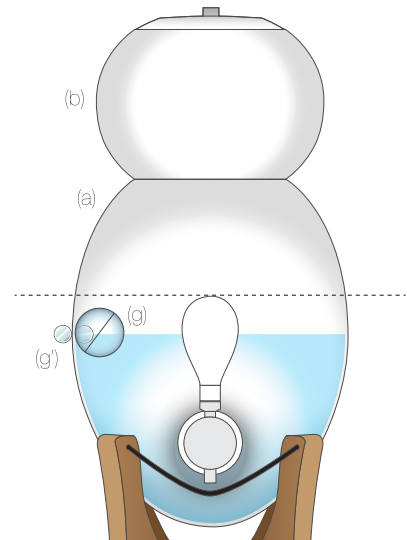
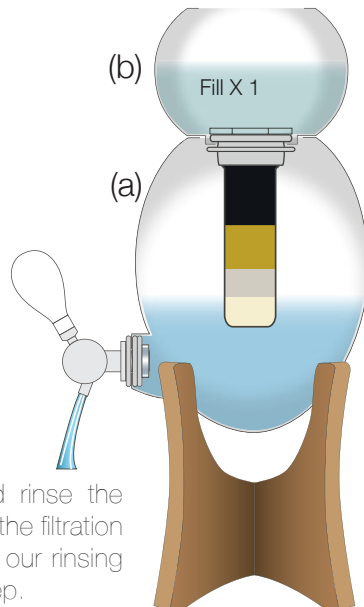
- ⑦ Fill the smaller reservoir with water until the large reservoir is full. Cover. Enjoy pure Aquaovo water!

The magnetized disc (g') on the magnetic gauge (g) indicates the water level inside the reservoir.

The virtual line traced by the top of the faucet handle shows the point from which you can refill the full filtration reservoir (4 liters) without fear of overflow.



- ⑥ Fill the top tank (b) and let the water (4 liters) pass through to rinse the cartridge. Empty the bottom tank then rinse it with clear water.



Don't forget to empty and rinse the bottom tank before starting the filtration process. You can also use our rinsing board to avoid this extra step.



Never fill the top reservoir when the bottom reservoir is already full.